

11/14/24

Dear Fawcett Wildlife Management Area Neighbor:

The Texas Parks and Wildlife Department is planning to conduct prescribed burns at the Fawcett Wildlife Management Area (WMA) at 4730 FM 2692 between January 1, 2025 and March 31, 2025.

During this period, you may see smoke in your area /neighborhood or on nearby roads. We caution you to reduce your speed and use your headlights when smoke is present.

Prescribed burns are a management tool used to restore forest and prairie habitats that were periodically burned by natural fires. Prescribed burns also reduce the potential damage a wildfire could cause by reducing available fuels such as dead trees, leaf litter and other flammable vegetation on the landscape. Prescribed fires on state parks are conducted by Texas Parks and Wildlife Department personnel who have undergone extensive fire training and meet national wildland firefighting and incident management standards. Additionally, the Wildlife Management Area staff will work with local fire and emergency management officials to plan and conduct the prescribed fire.

Each prescribed fire plan defines the local weather and other conditions under which a prescribed burn may be conducted, the personnel and equipment required, and fire-break locations. Most importantly, the fire plan prioritizes public and firefighter safety. The plan reduces the risk of fire escaping onto adjacent properties and minimizes the effect of smoke in nearby residential and smoke sensitive areas. The plan also establishes contingency measures to protect adjacent properties if the fire were to escape established boundaries. The prescribed burns are ignited in predetermined patterns that insures the best measures for containment.

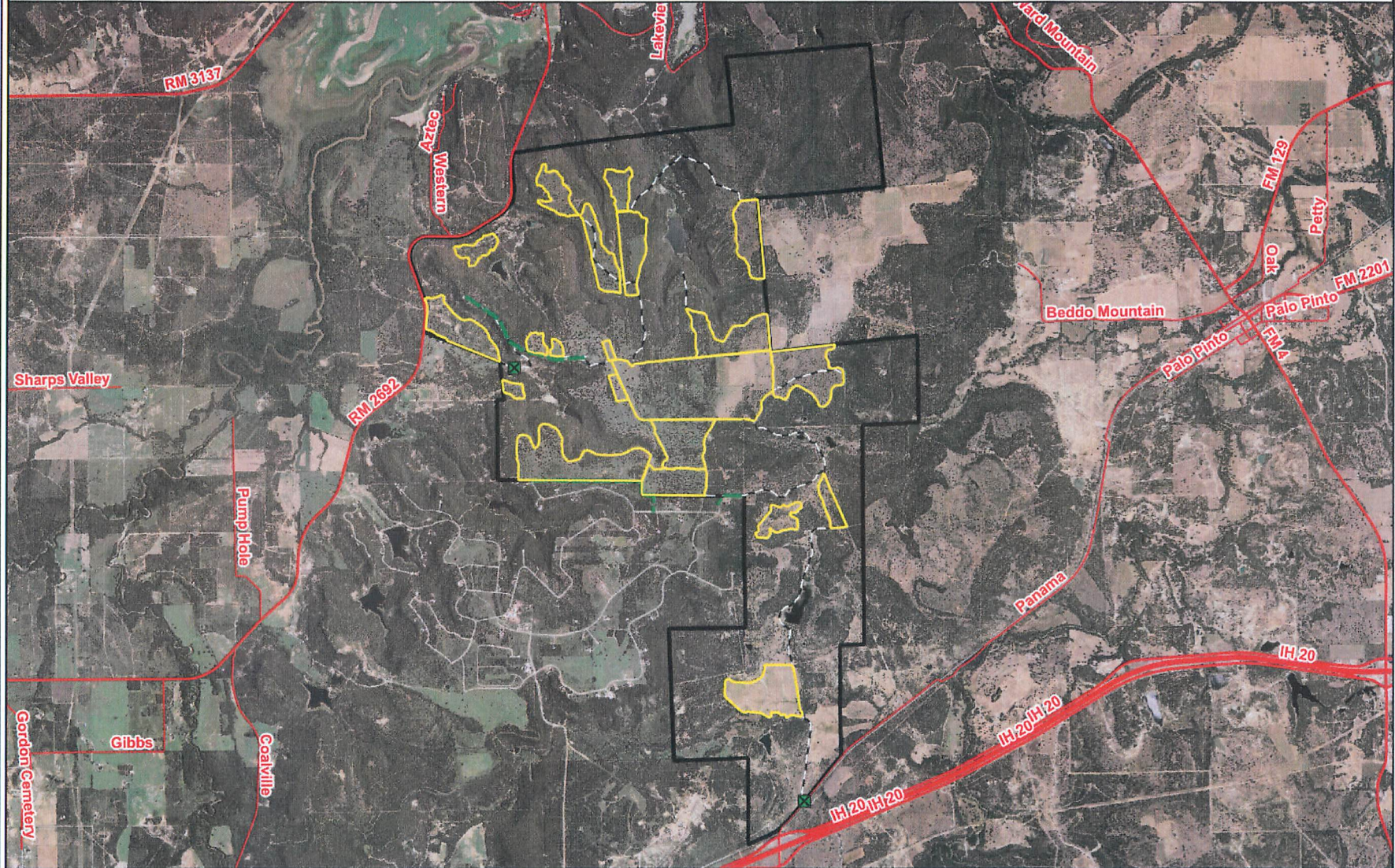
Texas has a history of naturally occurring wildfires, making prescribed burns very important to maintaining habitat on WMA's. Private landowners should consider implementing wildfire mitigation efforts on their lands as well in order to preserve their property and way of life before a wildfire event starts. Information on how to Wildland Fire Management:
http://tpwd.texas.gov/landwater/land/wildland_fire_management/

If you have any questions, please contact Wesley Evans at 512-265-4158 or email at Wesley.Evans@tpwd.texas.gov. If you would like to receive text message notifications prior to the burn, text 81010 with this message @rfwma. Thank you for your support and understanding of this valuable and necessary habitat management and fuel reduction tool.

Sincerely,

Anthony Gosnell
Wildlife Biologist
Fawcett WMA
4730 FM 2692
Gordon, Texas 76453
325-430-8373

Fawcett WMA Burn Units, Palo Pinto County: Prescribed Fire Notice - Winter 2024-25

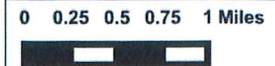


- TPWD Units**
- RX Fire Unit
 - WMA roads
 - Fawcett WMA boundary
 - X Entrance Gates
 - Overhead Elect PowerlineTxDOT_Roadways
 - County Roads
 - Highways



Maps are for planning purposes only. No claims to accuracy are made or implied.

WMA HQ
Lat: N 32° 36' 1.55"
Lon: W 98° 17' 37.79"



2018 NAIP Imagery
Fawcett RX Burn
Public Notice
map date-20241107
UTM z14N NAD83
TPWD:WL:WEvans

